

Fundamentals of Music

I. Write the following pitches specified within the staff above (do not use ledger lines) (1 pt. each; 4 pts)

E A-flat F-sharp B

II. On the space below each pitch, provide its name (for example C-sharp, F, E-flat, etc.)(1 pt. each; 4 pts.)

III. Write the following key signatures (2 pts. each; 8 pts.)

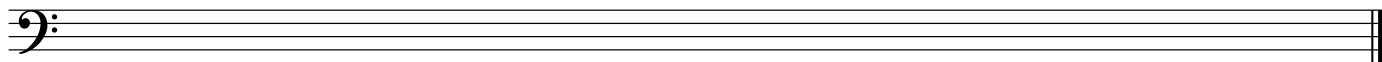
B major F major G# minor C minor

IV. On the space below each staff, identify the name of the scale written on the staff specifically (for example, A Major, B-flat harmonic minor, etc.) (2 pts. each; 8 pts.)

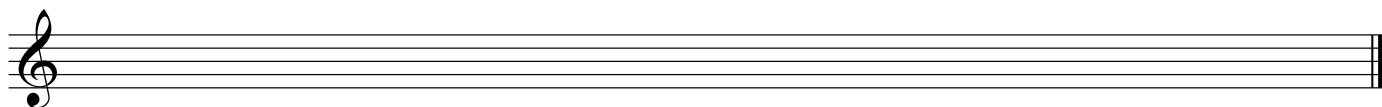
V. Write the following scales (ascending) as specified (using accidentals and/or key signatures) (1 pt. each; 3 pts.)

C# harmonic minor

2 B-flat major



Bb melodic minor (ascending and descending)



VI. Write the proper meter signature (time signature) at the beginning of each measure. (2 pts. each; 4 pts.)



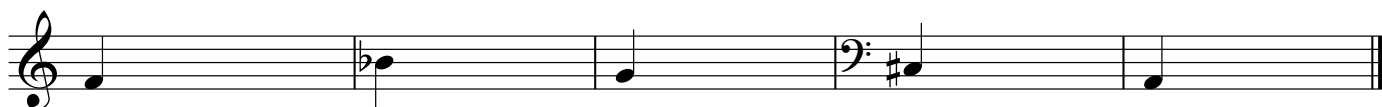
VII. According to the indicated meter, add a note with the value that will make each measure complete. (1 pt. each; 4 pts.)



VIII. On the space below each interval, provide its name (for example, Perfect 5th, Major 2nd) (2 pts. each; 10 pts.)



IX. Write the following melodic intervals ascending from the given pitch (using accidentals where needed) (1 pt. each; 5 pts.)



Perfect 4th

Major 3rd

Major 6th

Minor 3rd

Major 7th